

WEATHER

Weather is what is going on outside. We can use our senses and other tools to determine what the weather is today. Discuss as a class each activity on this page.



OBSERVE

What is today's weather? Circle the picture below:



Sunny



Partly Cloudy



Cloudy



Rainy



Snowy

What is the temperature today? This is a measurement that tells us when it is hot or cold. Use a thermometer or ask an adult to check online. Write the answer in the box.

°
F

Circle what season it is and what clothes you are wearing for the weather today.

SPRING

SUMMER

FALL

WINTER



DRAW

Are there clouds in the sky? Lay on the grass and draw what you see.

PLANT PARTS

All plants start as seeds and they grow roots, a stem, and leaves. Some plants have flowers and can grow fruit.



FIND

Search for seeds at the garden and check off the seeds as you find them. What do you notice about each seed? Can you open them up?



Samara - Maple Tree



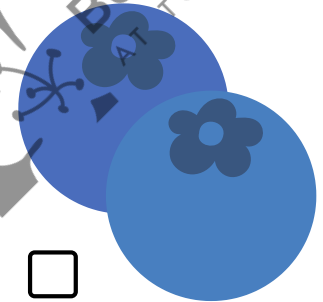
Pinecone - Pine Tree

Burr - Burdock



Acorn - Oak Tree

Blueberry (seed inside)



MATCH

Match the word to the plant part.



Leaves

Roots

Flower

Stem



ACT OUT

Pretend to be your favorite plant and stretch with us!



Stretch out your leaves (arms)



Wiggle your roots (toes)



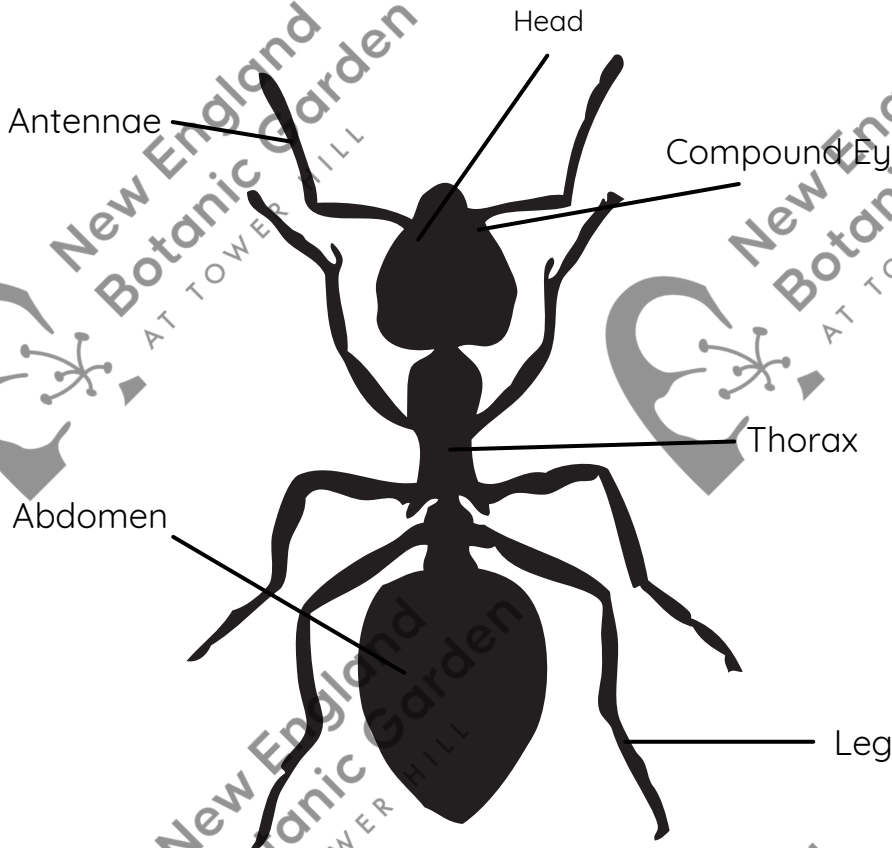
Shake off your petals (head)



Stretch your stem to the sky (body & arms)

INSECTS

Insects are important to the garden. They pollinate our flowers, eat bad bugs, are food for animals, and others are just cool to find.



COUNT



What parts do insects have?
Count how many eyes, antennae,
and legs this ant has and write
the number below.

Eyes _____

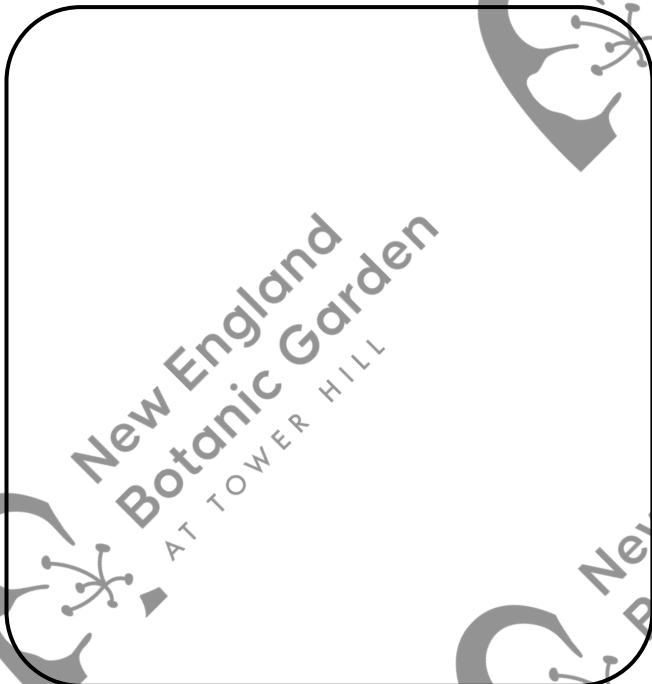
Antennae _____

Legs _____



DRAW

Draw your own insect. Make sure
it has 6 legs and 2 antennae.



FIND

Help the bee find the
way back to the hive.



START

